

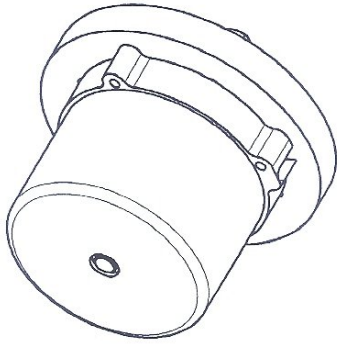
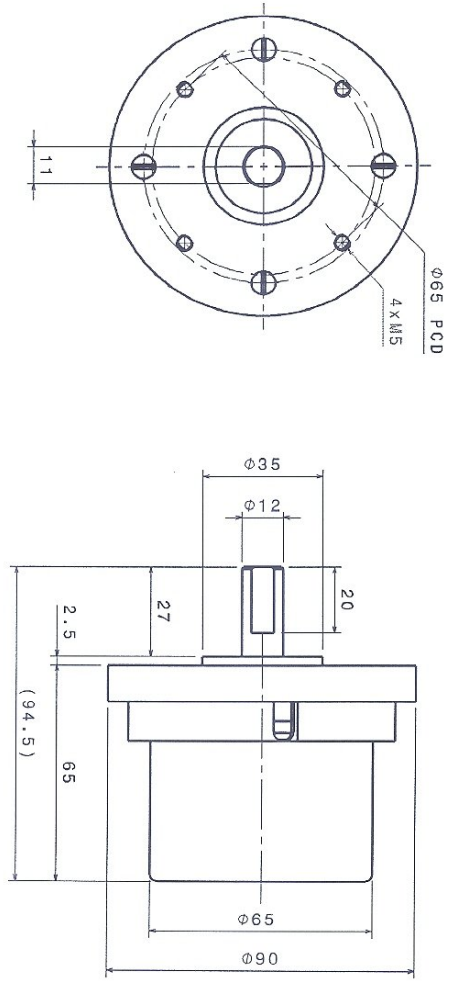
REV	DATE	DESCRIPTION	INIT
A	8/29/2015	CONVERTED TO CATIA. LENGTH 2.5 WAS 2.	ASW

Bill of Material: 2965-00

Quantity	Part Number	Type	Nomenclature	Revision
1	2965-01	Part	SHAFT	A
1	2789-02	Part	FLANGE	A
1	6001 ID12 OD28 THK8	Part	BEARING	-
1	2965-03	Part	BODY	A
1	627 ID7 OD22 THK7	Part	BEARING	-
4	ISO 1207 SCREW M4X16	Part	SCREW	-
1	STEEL GRADE A			
1	SLOTTED CHEESE HEAD			
1	3289-06	Part	STAMPING WITH WINDING 23-2	0
1	2965-04	Part	ROTARY CUP WITH PERMANENT MAGNET 23-2 FR	A

Recapitulation of: 2965-00  
 Different parts: 8  
 Total parts: 11

Quantity	Part Number
1	2965-01
1	2789-02
1	6001 ID12 OD28 THK8
1	2965-03
1	627 ID7 OD22 THK7
4	ISO 1207 SCREW M4X16
1	STEEL GRADE A
1	SLOTTED CHEESE HEAD
1	3289-06
1	2965-04



Isometric view

TACHOMETRIC CONTROLS  
 CONTROL COPY  
 Copy No. : 1  
 Issue Date : 29/8/2015  
 Issued To : ASW (Quality)  
 Issuing Auth. : ASW

DIMENSIONS ARE IN MM UNLESS OTHERWISE SPECIFIED.		REMOVE SHARP EDGES AND CORNERS. DO NOT CUT THE DRAWING. TAKE NOTE OF DIMENSIONS.		UNSPECIFIED TOLERANCE AS PER IS-2102 PART-1-1993 MEDIUM CLASS	
0.5 - 6	+0.1	6-30	+0.2	ASW	DATE
30-120	+0.3	30-120	+0.3	CHECKED BY	DATE
120-400	+0.5	120-400	+0.5	XXX	XXX
400-1000	+0.8	400-1000	+0.8	DESIGNED BY	DATE
1000-2500	+1.2	1000-2500	+1.2	ASW	9/29/2015
2500-4000	+2	2500-4000	+2		

TACHOMETRIC CONTROLS  
 SR. NO. 50/0/12 NEAR ABHIRUCHI IND. ESTATE,  
 POST-WARHE, TAL. HAVELI, PINN-411041 (INDIA)

DRAWING TITLE: BLDC MOTOR (MODEL 23-2)  
 DRAWING NUMBER: 2965-00  
 SCALE: 1:1 WEIGHT(kg): XXX REF. NO. 2789-00 SHEET 1/1